

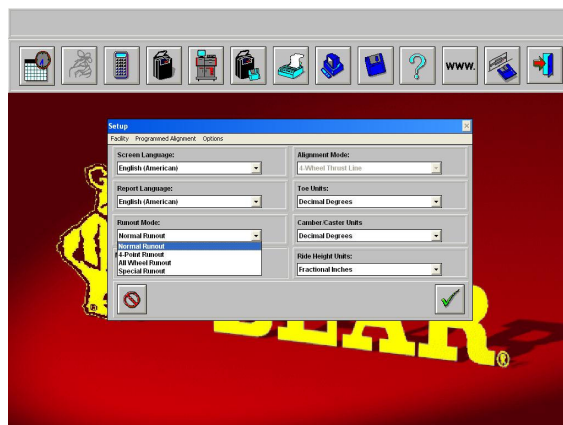
	<p align="center"><b>Northwest Equipment Sales</b>  a division of Northwest Equipment Manufacturing, Inc.  122 East Reserve Dr. • Kalispell, MT 59901 USA  • Office: 406-755-0805 • Fax: 406-755-0813  <b>Team Bear USA is a Factory Trained Independent Service Center  for the "Legacy Series" Bear Product Line</b></p>	
<p align="center">Reach us at: <b>877-FIX-BEAR</b> (877-349-2327)</p>		

We have attached some screen shots to give you a sample of the new CCD.COM (Bear Windows Alignment Software) program features:



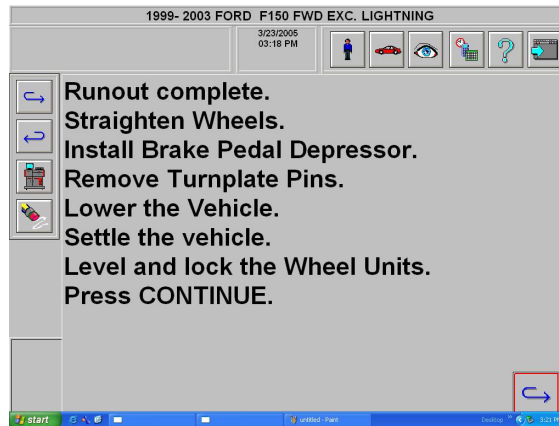
Main Screen

Make quick and easy selections with the click of a mouse. The orange and yellow keypad used on many machines will no longer be required.

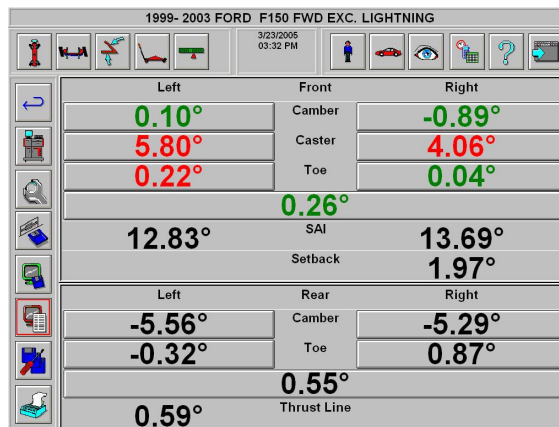


Setup Screen

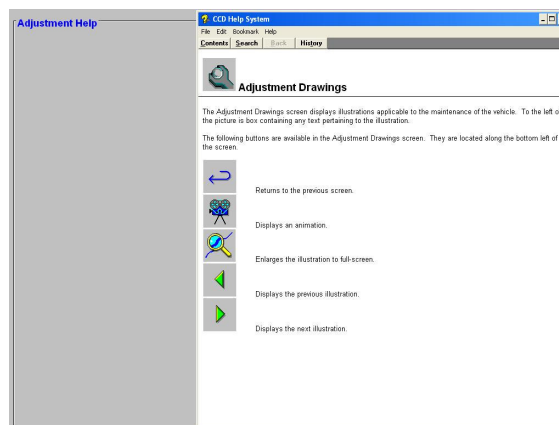
Preparation Screen



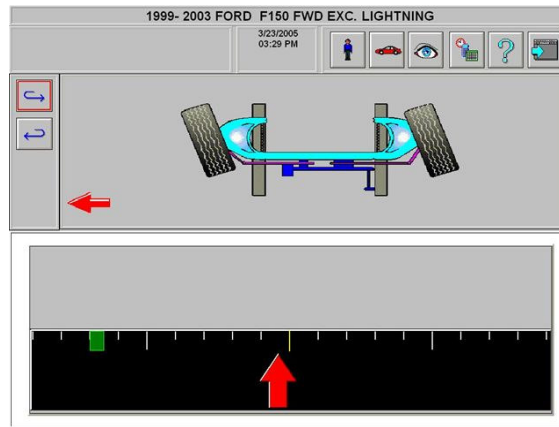
Preparation Screen



Main Readings

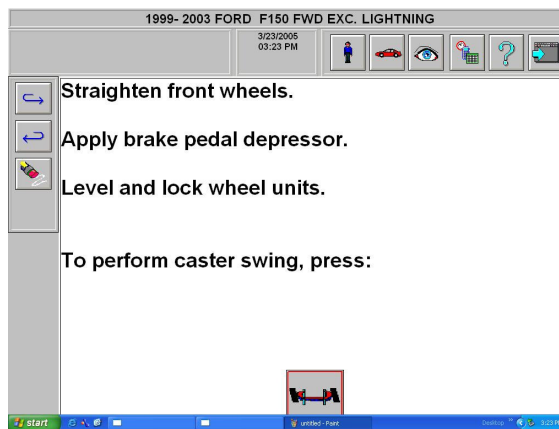


Adjustment Help Drawings



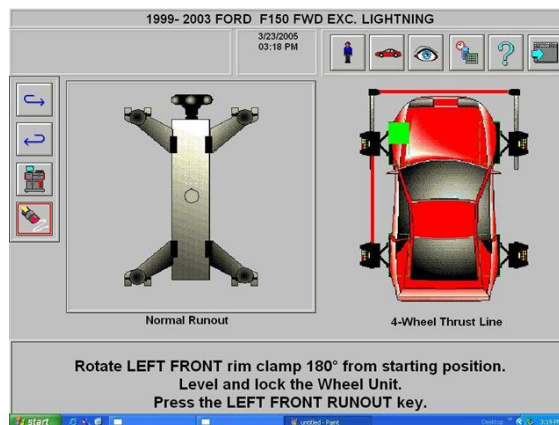
Caster Swing

Click on the question mark at any time for access to the built in help screens.



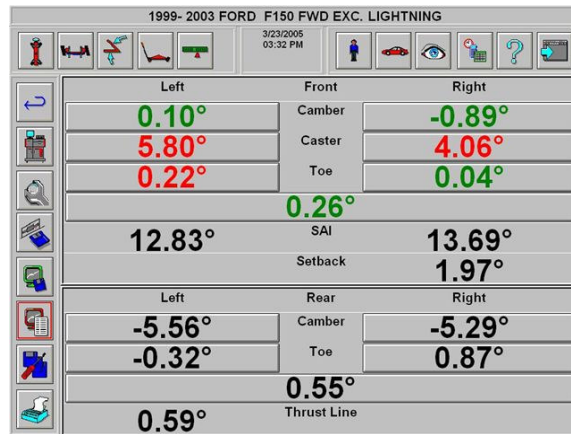
Caster Preparation Screen

With the click of a mouse choose 2-point, 4-point, or rolling runout.

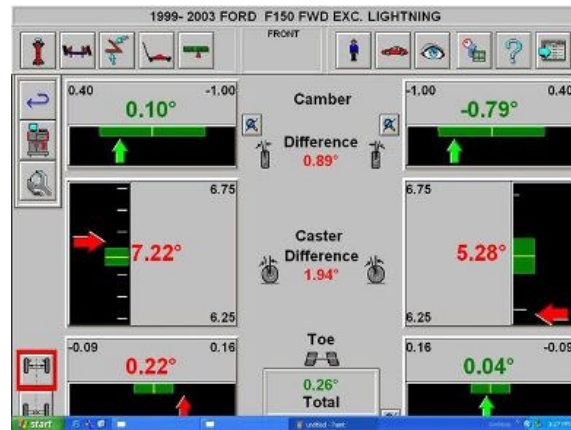


Runout Screen

Icons located along the left side screen allow the user to quickly save readings. You may also choose to add to the display your saved readings, vehicle specs, or choose only current readings as shown here.

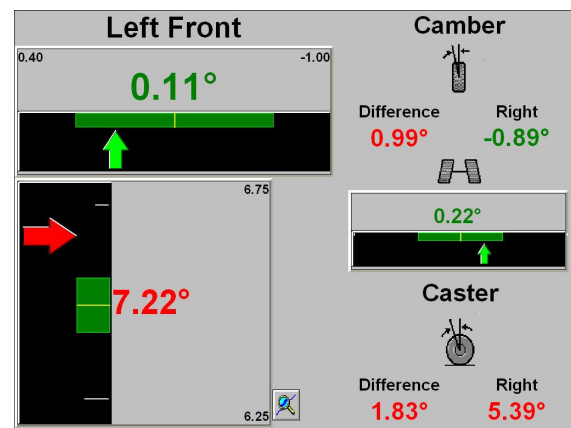


Main Readings Screen



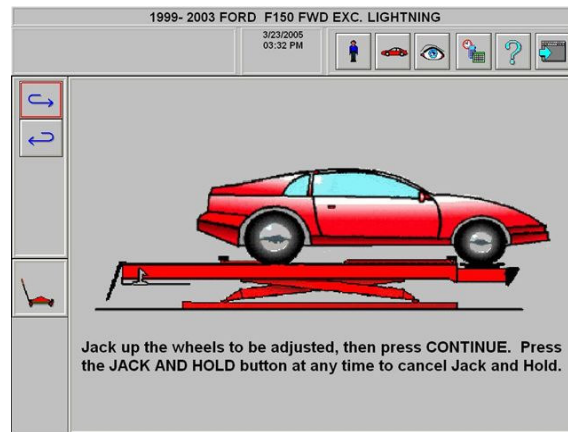
Click on the magnifying glass to see only that wheel's readings. Quickly choose front or rear readings with the selection at the lower left corner.

Graph Adjusting Screen-provides "live" readings



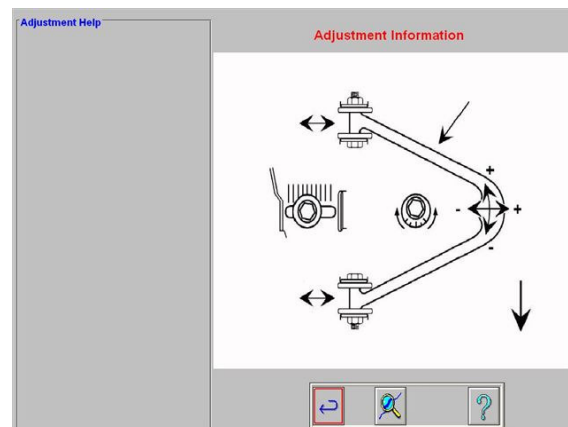
Large View of Graph

Jack and Hold helps achieve more accurate adjustments when lifting is required.



Jack and Hold Screen-prepares for “live” lifted readings

Need to train the new guy or just learning yourself? These screens can be a valuable resource and are full of helpful information.



Adjustment Illustrations and Videos help visualize service approach